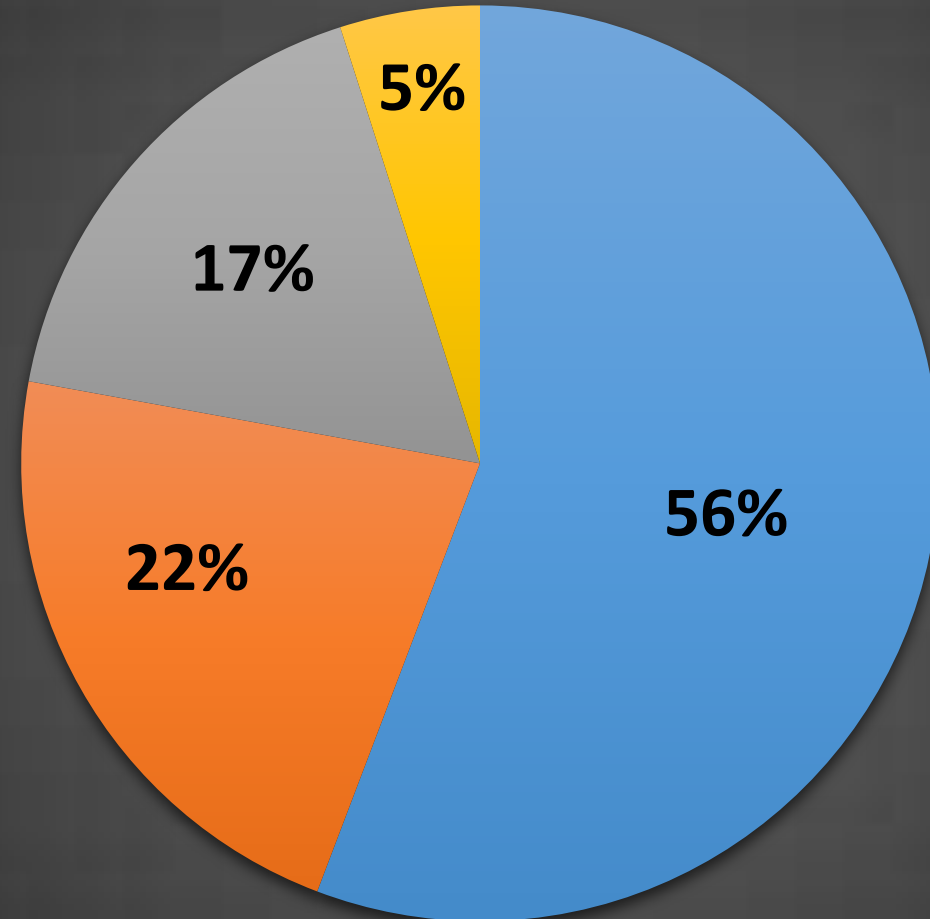


# MPTS 2015-2016 PTA Budget



■ CHILDREN

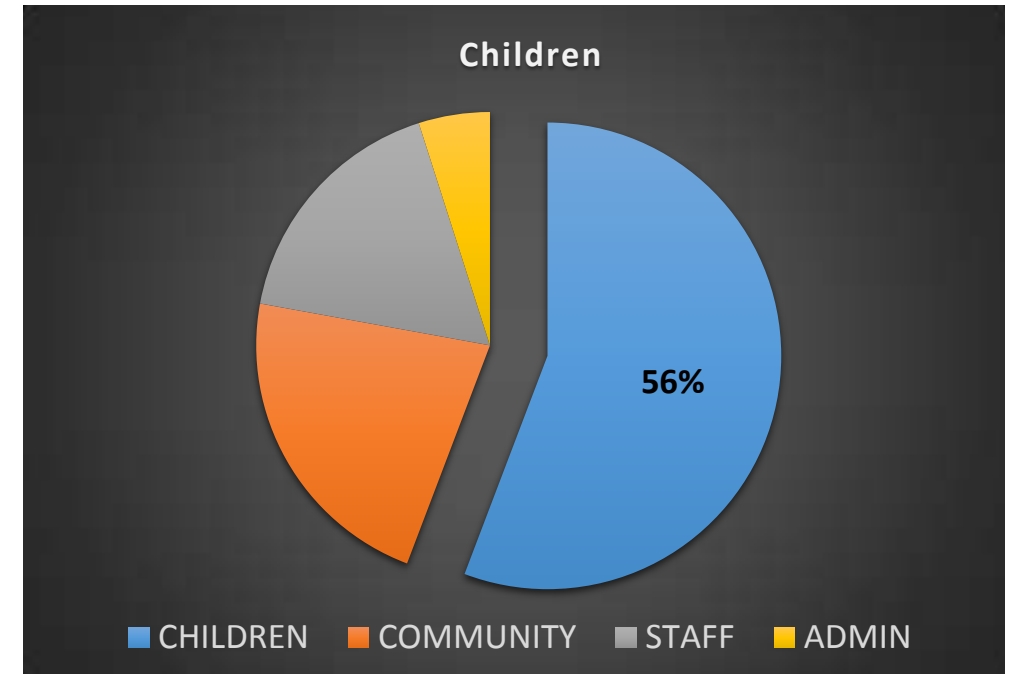
■ COMMUNITY

■ STAFF

■ ADMIN

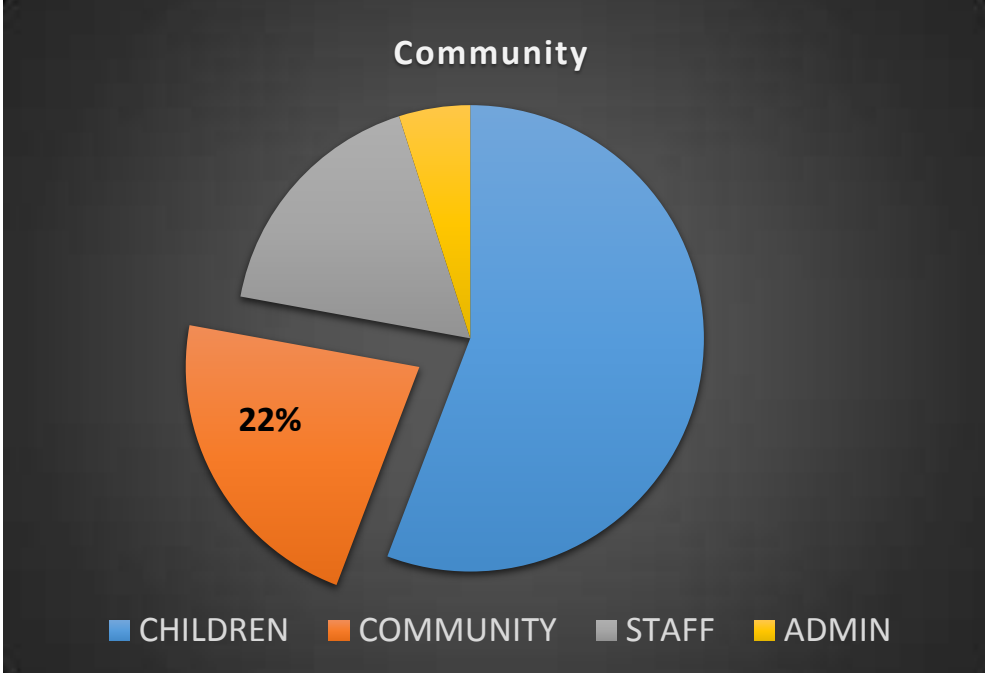
# CHILDREN

<b>CHILDREN</b>	<b>\$</b>	<b>72,314</b>	<b>56%</b>
Chess Instruction (K-2)	\$	13,000	
Student Planners & Scholastic News	\$	10,604	
Leader In Me	\$	10,000	
Media Center	\$	8,000	
Summer Start Up Costs	\$	5,000	
Balanced Literacy-Novel Replacements	\$	4,200	
Ink	\$	4,000	
Classroom Technology Advancement	\$	3,800	
Cultural Arts	\$	2,000	
Character Education	\$	1,750	
Million Minutes Expense	\$	1,500	
Lois Lee Camp Thunderbird	\$	810	
Art Program	\$	800	
Dr. Science	\$	800	
Music Program	\$	800	
PE	\$	800	
Technology	\$	800	
Health Room	\$	600	
Science Olympiad	\$	600	
Awards	\$	500	
Gold Level Activity	\$	500	
Field Day	\$	350	
Fifth Grade Reception	\$	300	
Room Parent Committee	\$	300	
Reading Celebration Day	\$	125	
Tutoring	\$	125	
Chess Club & Team	\$	100	
Clothing Closet	\$	100	
Honor Roll	\$	50	



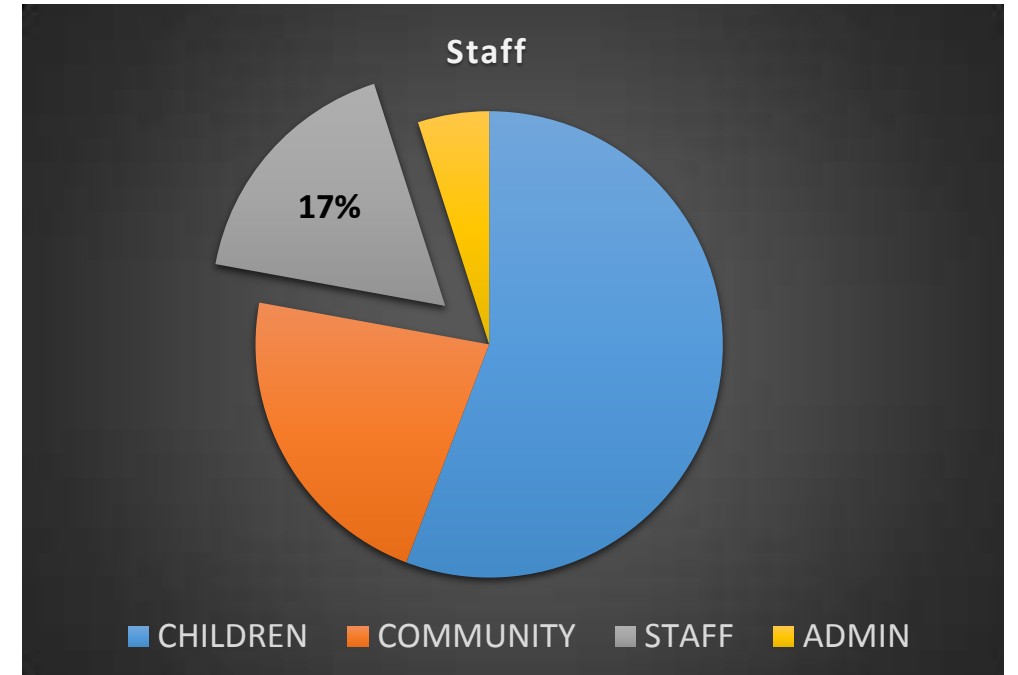
# COMMUNITY

<b>COMMUNITY</b>	<b>\$ 28,650</b>	<b>22%</b>
<b>Carnival</b>	<b>\$ 8,000</b>	
<b>Yearbook</b>	<b>\$ 6,000</b>	
<b>Community Building - expense</b>	<b>\$ 4,000</b>	
<b>Traditional Giving</b>	<b>\$ 2,000</b>	
<b>Family Picnic</b>	<b>\$ 1,800</b>	
<b>School Tours &amp; Marketing</b>	<b>\$ 1,500</b>	
<b>Beginners &amp; Newcomers</b>	<b>\$ 1,200</b>	
<b>Building &amp; Grounds</b>	<b>\$ 1,000</b>	
<b>Directory</b>	<b>\$ 1,000</b>	
<b>School Store Expense</b>	<b>\$ 1,000</b>	
<b>Digital Communication</b>	<b>\$ 700</b>	
<b>Corporate Offerings</b>	<b>\$ 450</b>	



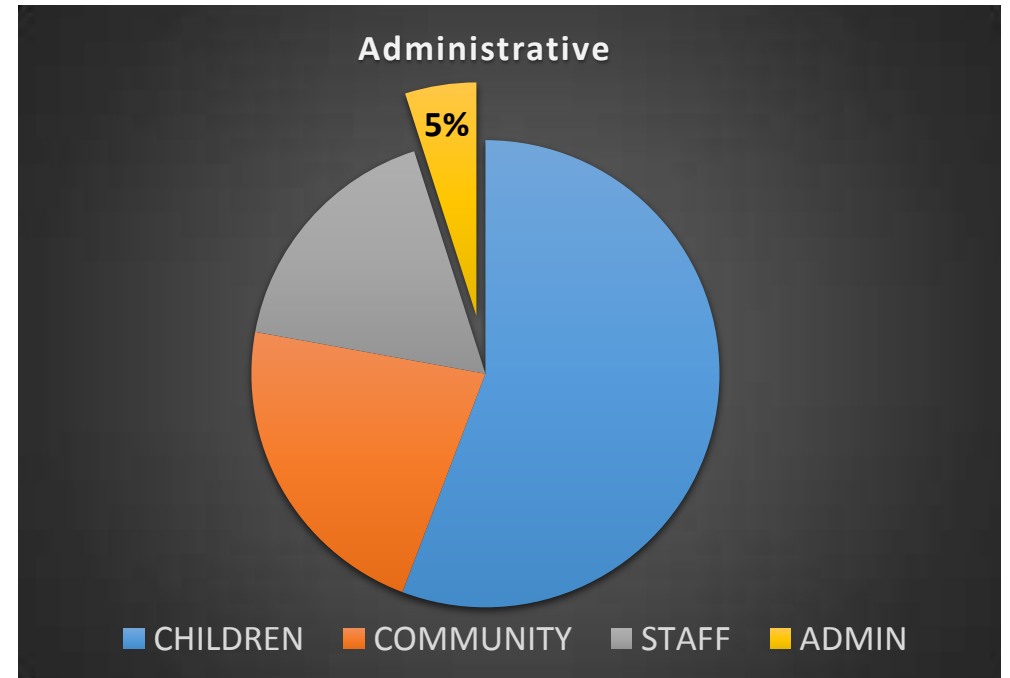
# STAFF

<b>STAFF</b>	<b>\$</b>	<b>22,300</b>	<b>17%</b>
<b>Educational Needs</b>	<b>\$</b>	<b>8,000</b>	
<b>Teacher Appropriations</b>	<b>\$</b>	<b>3,800</b>	
<b>Staff Development</b>	<b>\$</b>	<b>3,000</b>	
<b>Hospitality</b>	<b>\$</b>	<b>2,500</b>	
<b>Staff Appreciation</b>	<b>\$</b>	<b>2,200</b>	
<b>Custodians Cafeteria &amp; Staff</b>	<b>\$</b>	<b>1,000</b>	
<b>Lois B Lee Funding</b>	<b>\$</b>	<b>1,000</b>	
<b>Java Jeff's</b>	<b>\$</b>	<b>800</b>	



# ADMINISTRATIVE

<b>ADMIN</b>	<b>\$</b>	<b>6,391</b>	<b>5%</b>
<b>PTA Convention &amp; Obligations</b>	<b>\$</b>	<b>2,636</b>	
<b>PTA Dues &amp; Expense</b>	<b>\$</b>	<b>2,300</b>	
<b>Copier &amp; Supplies</b>	<b>\$</b>	<b>550</b>	
<b>Insurance - PTA</b>	<b>\$</b>	<b>355</b>	
<b>Postage &amp; Tax Preparation</b>	<b>\$</b>	<b>350</b>	
<b>Miscellaneous (Bank Charges etc.)</b>	<b>\$</b>	<b>200</b>	



# INCOME

<b>Income</b>	<b>\$</b>	<b>129,655</b>	
<b>Traditional Giving Income</b>	<b>\$</b>	<b>65,000</b>	<b>50%</b>
<b>Beginning of Year Fees</b>	<b>\$</b>	<b>9,000</b>	<b>7%</b>
<b>Carnival - Income</b>	<b>\$</b>	<b>9,000</b>	<b>7%</b>
<b>Media Center Income</b>	<b>\$</b>	<b>8,000</b>	<b>6%</b>
<b>Million Minutes Pledges</b>	<b>\$</b>	<b>8,000</b>	<b>6%</b>
<b>Corporate Donations-Spirit Nights</b>	<b>\$</b>	<b>7,000</b>	<b>5%</b>
<b>Community House Income</b>	<b>\$</b>	<b>6,000</b>	<b>5%</b>
<b>Yearbook Income</b>	<b>\$</b>	<b>6,000</b>	<b>5%</b>
<b>PTA Membership</b>	<b>\$</b>	<b>3,000</b>	<b>2%</b>
<b>NC Sales Tax Refund</b>	<b>\$</b>	<b>2,000</b>	<b>2%</b>
<b>Technology Investment</b>	<b>\$</b>	<b>1,855</b>	<b>1%</b>
<b>Family Picnic - Income</b>	<b>\$</b>	<b>1,800</b>	<b>1%</b>
<b>School Store - Income</b>	<b>\$</b>	<b>1,600</b>	<b>1%</b>
<b>Donations - PTA</b>	<b>\$</b>	<b>1,000</b>	<b>1%</b>
<b>Young Masters - Income</b>	<b>\$</b>	<b>400</b>	<b>0%</b>

